

English (Reading and writing):

Text drivers/books to share: The Land of Neverbelieve by Norman Messenger.

Reading

Children that are part of our phonics scheme (Read Write Inc), will continue to improve decoding and fluency when reading. Children that are fluent will be focussing on their reading skills to aid comprehension. We are using Reading VIPERS to help with this.

Writing

In English, Year 6 will be studying the book 'The Land of Neverbelieve'. They will be using various sentence structures to help keep the reader engaged throughout a piece of text. The text type the children will be focussed on is a 'non-chronological' report. They will use structures to help guide the reader as well as descriptive language. They will need to use the correct tense and enhance meaning by choosing appropriate vocabulary. In their final piece they will also need to be aware of the level of formality required. The second piece of writing will focus on the use of dialogue in a narrative to inform the reader of mood, characterisation and move the action on

DISCOVER: Art - Coastal Landscapes

Children will be looking at Coastal Landscapes and the romantic movement, with a focus on the Isle of Wight and the work of Turner. Children will be encouraged to sketch using charcoals, paint with water colours and use mixed media based on poetry by Keats. Children will learn the terms picturesque and sublime and analyse various coastal landscape paintings.

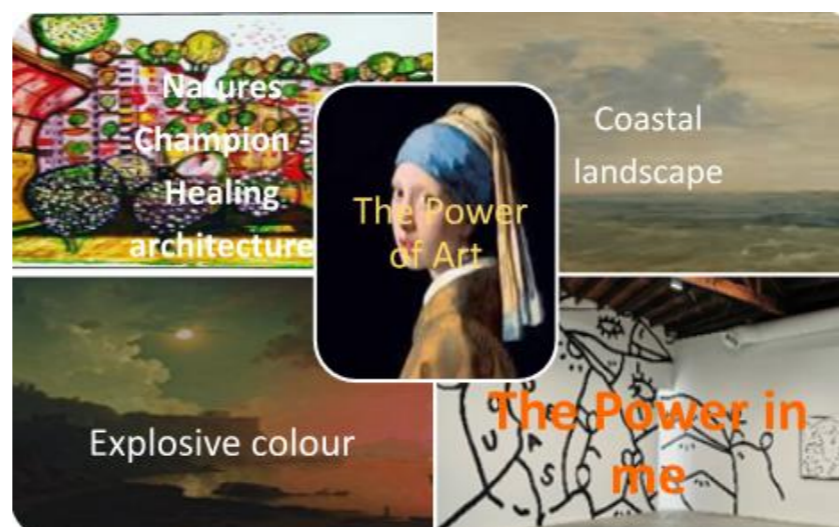
Modern Foreign Languages - French

This half-term, year 6 will be covering:

- Armistice in France
- Classroom objects
- French alphabet and spelling
- Order and position of words in a sentence
- Formal/Informal language
- Dictionary work
- St. Nicholas and Christmas celebrations in France

Physical Education:

This half term, year 6 will be learning the skills of athletics in PE. They will be looking at running - pacing themselves according to the distance, throwing techniques and jumping.



Brook Class

Year 6 Mrs Shepherd

Autumn 2 Term

Religious Education:

In RE we will be looking at INTERPRETATION - the two birth narratives. They will look at why there are two *interpretations* of the story of the birth of Jesus in the Bible and begin to explain a personal response to the way in which different *interpretations* of situations have been evident in their own experience.

TOPIC - Geography focus

Children will be looking at coastal features around the United Kingdom before focussing on the Isle of Wight. Children will look at coastal towns and how they are used as well as the impact on the environment. We will then look at coastal defences.

HOMEWORK

This half term the children will be getting homework on a weekly basis. The homework will include either maths, reading comprehension or SPaG. This will be given on a Thursday and expected in the following Tuesday. The children are expected to be practising times tables as well as reading regularly during the week.

Mathematics:

Over the next term, Year 6 will be consolidating their knowledge in the areas of: multiplication and division strategies, fractions, percentages, time and measurement. Children will continue to practise their times tables recall.

In addition to tackling these National Curriculum objectives, the children will be challenged to apply their newly taught knowledge through challenges, problem solving activities and mathematical investigations.

STEM

Science:

Topic: Energy - Light and Reflection

Children in year 6 will be Proving that light travels in a straight line, and use this information to explain observations of reflection and shadows. Pupils will investigate the effect of moving an object away from the surface it casts a shadow on and the relationship between the incoming and reflected rays on a mirrored surface. They will be exploring real uses of mirrors and apply what they have learned about light throughout the unit.

Computing:

Web page creation (creating media)

This half term children in year 6 will recognise that a website is a set of hyperlinked web pages. They will also recognise components of a web page layout and understand the ownership and use of images (copyright). By the end of the unit children will be able to create their own webpage using Google sites

PSHE:

In PSHE this half-term, year 6 will be looking at valuing difference. We will be looking at: 1) OK to be different; 2) We have more in common than not; 3) Respecting differences; 4) Tolerance and respect for others; 5) Challenging gender stereotypes.

No Outsiders - we will be looking at 'The king of the sky' by Nicola Davis, which focuses on immigration. Children will learn to show empathy and what immigration is.